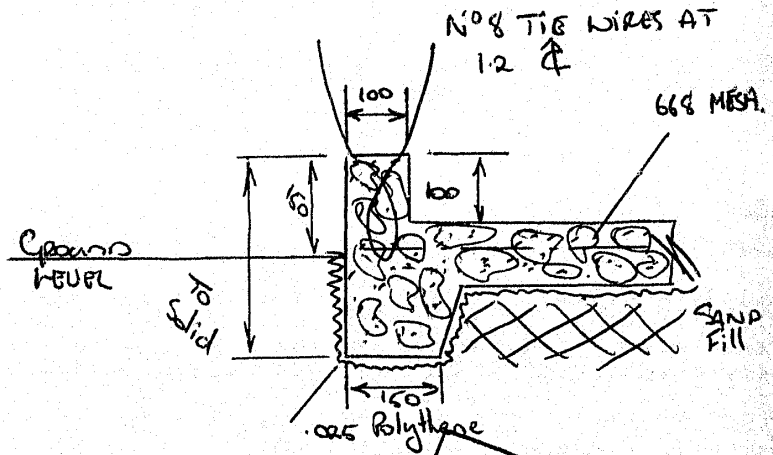
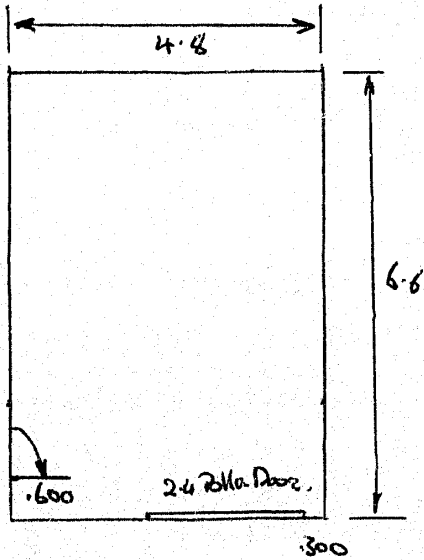
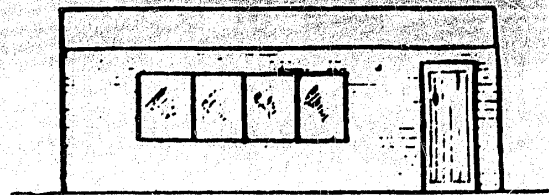
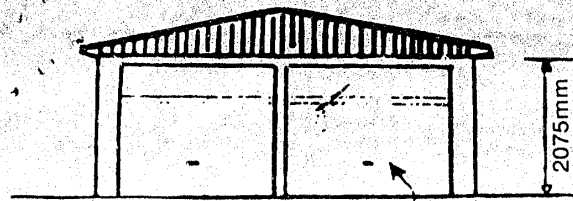
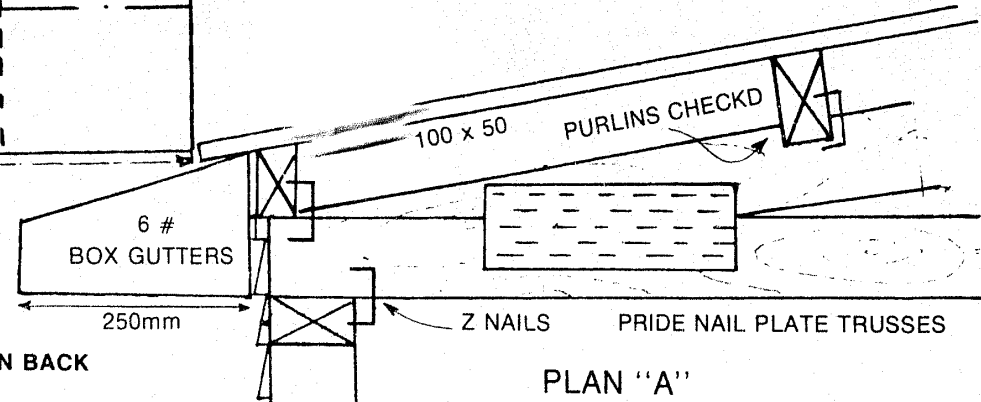
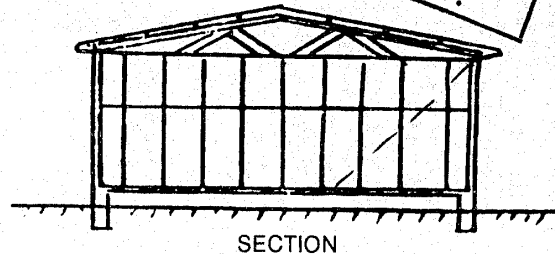
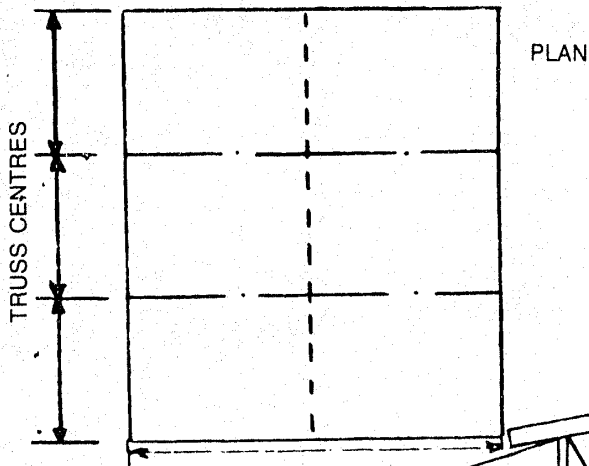


ELEVATION



RECEIVED
- 4 JUL 1991
BLDG. DIV.



NOTE! SITE PLAN ON BACK

PLAN "A"

SPECIFICATIONS

- Foundations** 200mm x 200mm Concrete Blocks @ 1200mm No. 8 wire ties
Concrete Slab, Nib Wall No. 8 wire ties.
- Plates** 100mm x 50mm B.T. Rad. 150mm clear of ground.
- Studs** 100mm x 50mm B.T. Rad. @ 600mm CRS.
- Nogs** 100mm x 50mm B.T. Rad. 1 Row
- Purlins** 100mm x 50mm B.T. Rad. on edge checked 25mm over Trusses
installed @ maximum 650mm CRS.
- Roof** Pride Nail Plate Trusses by Ideal Constructions (Auck) Ltd, at
2400mm Centrs. AK 2182-1
- Cladding** Roof 0.45 Galv. Corr. Iron
Walls 0.45 Galv. Metal Weatherboard

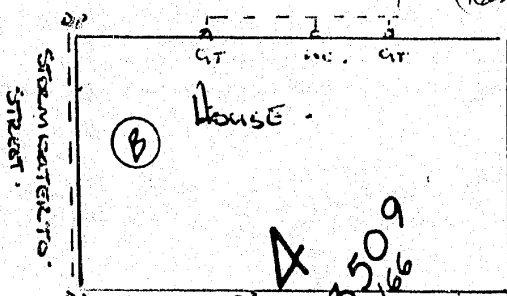
3509

8
D.P.S. 3509

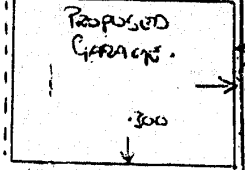
9
D.P.S. 3509

Reg'd

145° 22' 50"
22' 45" H.C. Main sewer line
physically located (has been)

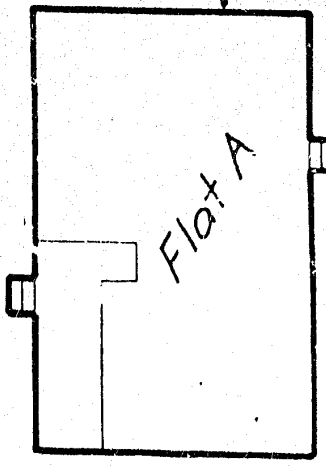


A
D.P.S. 3509
C.T. 22/66
Stream water to existing 4'8"



4'8 Firewall
150

(22'43") (B)
19'38" (A)
CROSSWALK Boundary



Flat A

18'49" (B)

19'36" (B)
(43'86") Bdy

305" (C)
(97'26") Bdy

30"
78'77" (C)

25'26" (A)

36"
24'50" (A)
57°

141° 51' 30"

2
D.P.S. 3528

